

MXF 627 *XSafe*

Modular Ice Machine 300 kg

Scotsman®
Ice Systems

Item
Project
Quantity



FEATURES

- Top Materials: AISI 304 Stainless steel and new removable grid
- Core Ice System: Stable evaporator system (Axial load).
- New Core Evaporator: Highly balanced auger (double fly system).
- New Gearmotor: Evaporator stability improved and noise free.
- Innovative Ice Breaker: Very dry flake ice - 12% of water contents.
- Durable Operations: High efficiency and better performance.
- Easy to Clean: Facilitated cleaning process and XSafe standard.
- New High-tech Water Sump with easy regulation system.
- New ice level sensor: for seamless operations.
- New Display: Touch & Smart.
- XWave: New App with improved electronics and programming.

CONDENSING SYSTEM

Air cooled
Water cooled

REFRIGERANT GAS

R290

VOLTAGE

V/HZ/PH
230\50\1

RECOMMENDED BIN

BIN

KG

SB322

168



CERTIFICATIONS



OPERATING REQUIREMENTS

	Minimum	Maximum
Air temperature	10	43
Water temperature	5	38
Water pressure	1 bar (14 psi)	35 bar (70 psi)
Electrical voltage	-10%	+10%

IMPORTANT NOTICE

Models and specifications are subject to change without notice. This spec sheet is meant for commercial purpose only. For technical documentation please refer to our service manuals.

www.scotsman-ice.it
www.scotsman-ice.com

Modular Ice Machine 300 kg

February 2025

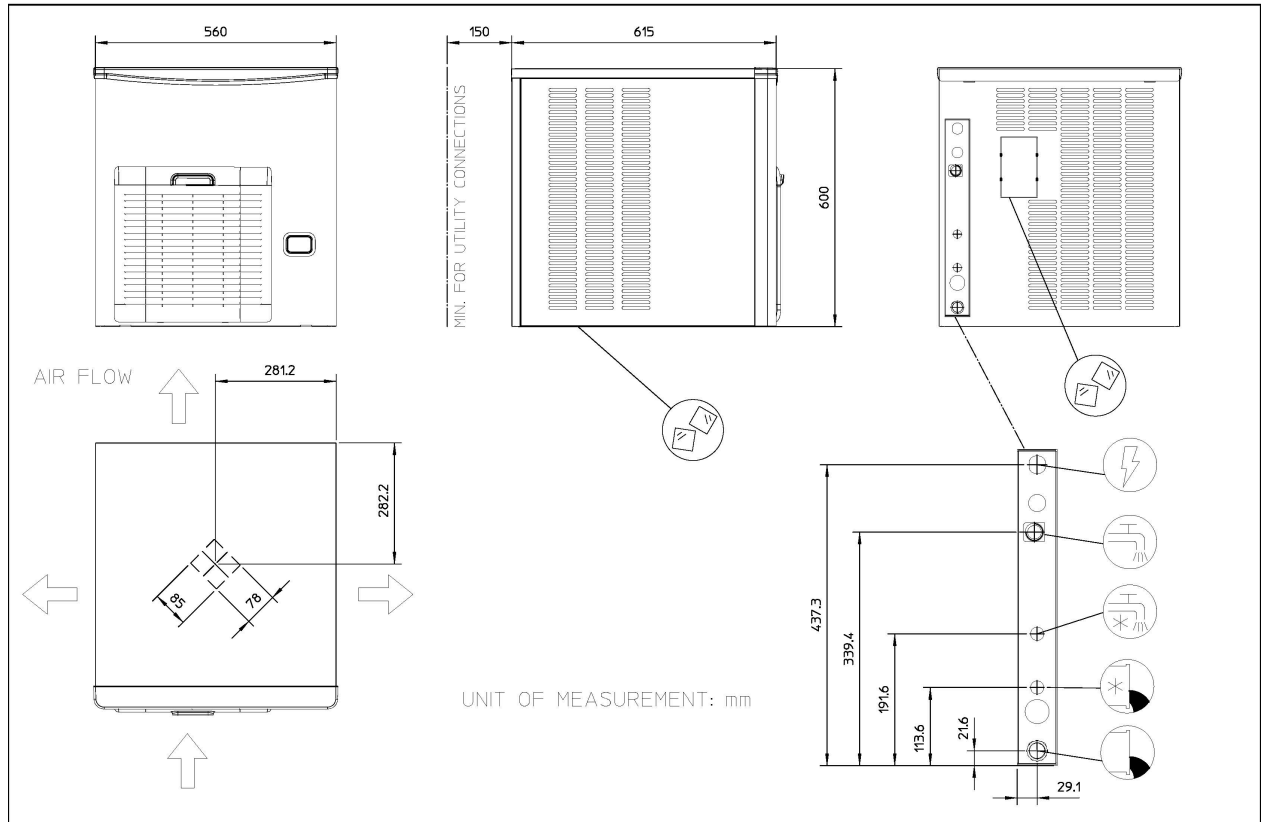
MXF 627 *XSafe*

Modular Ice Machine 300 kg

Scotsman[®]
Ice Systems

Item
Project
Quantity

Modular Ice Machine 300 kg



UNIT DATA			SHIPPING DATA				(*) Data refer to 32°C Amb. / 21°C Water temperature conditions					
Size (W x D x H)			Size (W x D x H)									
Net weight			Gross weight									
560 x 600 x 600 mm			775 x 690 x 625 mm									
51 kg			61kg									
			24 h ice production kg C Amb. / °C Water			Heat Rejection	Energy Consumption (*)	Water Usage (*)	instant power	circuit wires	Max. Fuse Size	
Version	Voltage	Condensation	10°C/10°C kg	21°C/10°C kg	32°C/21°C kg	W	kWh/ 24h	l/h	W	No. x Ømm ²	A	
MXF 627 AS OX	230\50\1	A	300	270	230	2,2 kw	25	9	1.080	3 x 1,5	10	
MXF 627 WS OX	230\50\1	W	280	265	230	2,2 kw	21	83	900	3 x 1,5	10	